

PROGRAMS

THE OLIVE BRANCH

2021



A close-up, high-contrast photograph of an elderly woman's face. She has deep wrinkles and is looking slightly to the side. She is wearing a red headscarf. The lighting is dramatic, with strong highlights and shadows.

Our Mission

The Olive Branch for Children ("TOBFC") helps remote communities in Tanzania assess their primary needs and establishes programs that target the most vulnerable in those communities.

We focus on HIV/AIDS prevention and care, community health care, early childhood education, older adult care, maternal and child health, support and care for people living with disabilities, food security, financial security, water security, sanitation and hygiene, infrastructure development, environmental issues, gender equality, and vulnerable children and women.

The goal is to establish community-led programs which empower remote communities and generate models that can be replicated in communities throughout Tanzania and elsewhere.

Every year, over

150,000

individuals are positively impacted

by our programs operating in over

40

different communities.

TOBFC is a not-for-profit corporation incorporated in Ontario, Canada and a registered charity in Ireland. TOBFC is a registered NGO in Tanzania. While most of our fundraising occurs in Canada, Ireland and Germany, our operations are conducted in the Mbeya Region of Tanzania. Our offices in Tanzania, Kubuni Centre and Collaborative and Zion Home are located in Uyole, Mbeya. Our community outreach programs operate in over 40 communities in the Mbarali District of Tanzania.

All but two of our staff are Tanzanians and generally they come from the communities in which we work. We constantly receive feedback from our beneficiaries, village leaders and the government to ensure that our programs align with the needs of our communities and Tanzania.

A zebra with black and white stripes is grazing on the ground in a dry, open landscape. The ground is sandy and covered with small clumps of dry grass. In the background, there are sparse, dry bushes and a few acacia trees under a clear, light blue sky.

The Region

The scenically stunning Usangu Flats is a mesmerising area of Tanzania. From lush wetlands during the rainy season, to expansive grasslands into the horizon during the dry season, the Usangu Flats is teeming with life. From buzzing human activity, to wonderful wildlife, the Usangu Flats synthesises so much of Tanzania's diverse beauty.

History of the Usangu Flats

The available documented history of the Sangu indicate that historically there were three kindred groups; the Mgawa (who settled in Milamba and lived in the north of Ruaha), Mhami (settled in the area of Madundasi and Utengule) and Mswaya (settled in the West of Sangu).⁴

These various groups, spread across the Usangu Plains, the catchment area of The Olive Branch for Children, and were ruled by one royal line of Chiefs, the Merere, since the foundation of the Sangu Royal line.³ Utengule is documented as the location where the line of Chiefs has ruled Usangu in the Chief's palace, until Tanzania was granted independence in 1961.³

The house is described as a *"two story white building in the center of the village, the only structure of its kind in the area"*³ (pg. 4). The chiefs house was completed in 1896.⁴ Because the palace was built in phases, it was a long process that captures the complex history of the Usangu. The house was started to be built in 1870s, based on Arab designs.



By 1971, there stood the initial one-story structure, by 1896 the two story structure was completed.³ In 1950s, the Chief Alfeo (the current chief's father) had added a small structure. The furthest communities in our catchment area must travel one hour by motorcycle to the nearest health dispensary, and another hour to reach a larger health clinic.

By 1988, the house became inhabitable. Alfeo lived in this house until his death, therefore he is the first chief who cannot live there because of its condition.³

The land where this house is specific to the culture of the Sangu. It is believed that the first chief put a protective shield on this land to protect the chief and those buried on the property.⁴ It has been stressed by Chief Merere, and community members, that the chiefs duties cannot be moved to any other piece of land or structure.⁴

In Sangu culture, the palace is where they were able to store all the historical artifacts, it's an official meeting palace for the Sangu Elder Committee and the burial place for all Chiefs and any traditional believer.⁴

This is the single building that captures the above kindred groups and their history, and is believed to be the last chance to preserve the Sangu Culture.⁴ Chief Merere has emphasized that within Utengule, the standing Palace is a symbol of Sangu culture and emboldens a sense of cultural preservation in the communities.⁴

TOBFC is currently looking into efforts to restore the Chiefs Palace and preserve the Usangu culture.



References:

- [1] United Republic of Tanzania (2016) Demographic Health Survey and Malaria Indicator Survey 2015/16. Dar es Salaam: Minister of Health, Community Development, Gender, Elderly and Children.
- [2] United Republic of Tanzania (2012) Population and Housing Censuses. Dar es Salaam: National Bureau of Statistics, Ministry of Finance.

- [3] Walsh, M. (1983) Merere The Arab: Legitimacy Upside-down and Inside-out. Department of Social Anthropology, University of Cambridge.
- [4] Chief Merere (2018) "History of the Sangu" Interviewed by: The Olive Branch for Children

CHILDREN AND YOUTH CARE

- Zion Home
- Peace Home
- Montessori Kindergartens
- Montessori Academy
- Academic Support

FINANCIAL CARE

- KUBUNI Centre
- KUBUNI Arts
- KUBUNI Innovation
- KUBUNI Cup
- FINANCIAL Autonomy
- Community Cooperative Banks
- Social Funds
- KUBUNI Grants



HEALTH CARE

- Mobile Medical Clinic
- Healthy Mamas
- Feet First
- Health Outreach

COMMUNITY CARE

- Complete Community Care
- KICKIT mobile libraries
- Infrastructure Development
- Cultural Preservation

CLIMATE CARE

- Reforestation + Revitalization
- TOBFC better fuel
- Kutunzu Gas
- Rent-to-own beekeeping

TOBFC PROGRAMS

*What you see is a complete overview of all our programs, that belong to the Olive Branch for Children in Tanzania / Mbeya. **Find more informations in the respective chapters.***



CHILDREN

AND

YOUTH CARE



CHILDREN AND YOUTH CARE

ZION HOME

PEACE HOME

*The Zion and Peace homes house more than **80 children and youths**.*

The Zion Home is situated in the village of Uyole, Mbeya, and Peace Home is located in Mswiswi, Mbarali.

The homes provide comprehensive care, education, nutritious food, a safe living environment, enriched extra-curricular programming, and connections to valuable resources and opportunities.



In addition, TOBFC commits to full sponsorship of each youth's education. Montessori and primary level education are provided directly at the Zion Home through the Olive Branch Montessori Academy. Students are supported through to the secondary school, community college, technical college and/or university levels of education.

Our children are accomplished and hard-working students, supportive brothers and sisters, and incredible young leaders in their communities. Through our village outreach programs and Tanzanian Social Welfare, more children are constantly being placed with us. The reasons why children are placed with our homes vary.

However, the most common are:

- *Girls who are in danger of being sold into early-childhood marriage*
- *Children with unfit or deceased parents, with no surviving family, prepared to look after them*
- *Children achieving high academic standards who are unable to access the education they deserve*
- *Children with long-term health needs including HIV, heart conditions, hearing impairment, et al.*



By providing children with a safe, loving environment, we are helping them reach their potential. TOBFC is committed to ensuring the children and youths in our care receive the educational opportunities that will allow them to pursue their academic goals.

Moreover, we believe it is vital to prepare the children and youths at the Zion and Peace Homes for successful professional careers.

School fees, university fees, technical college fees, school transport, uniforms, stationery and text-books are the biggest and most important annual expenses for TOBFC.

ZION HOME

PEACE HOME



What makes our homes different?

- *We invest in high quality education*
- *We provide our youth with internship opportunities and connections to the businesses in Mbeya for future employment opportunities*
- *We ensure our youth, as able, engage in post-secondary and/or technical college training*
- *We prioritize nurturing the relationships of our youth with their surviving family*
- *All youth in our care volunteer with TOBFC in their own communities*
- *All essential staff of our homes are Tanzanian*
- *None of the operating costs of our homes are predicated on "voluntourism".*

This ensures the sustainability of our projects and minimizes the exploitation of children in our care. TOBFC also supports 30 more children who live with their surviving families, enabling them to access education and better nutrition.

We offer leadership camps, family trips, after-school tutoring, sports programs and camps, gender equality mentorship programs to the children and youth within our care.

The Zion and Peace Homes nurture future leaders.

ACADEMIC SUPPORT



The Olive Branch for Children provides academic support to a number of Tanzanian students. Education is central to eradicating many of the socio-economic disparities in Tanzania.

Ensuring youths are able to access education not only helps the most vulnerable gain a formidable voice within their communities, Tanzania and abroad, but closes the income gap between rural and urban populations. Ultimately, the goal is to prepare the youths we serve to be gainfully employed.

Education is key to helping youths secure good jobs in the future. We know that education can be inaccessible for a variety of different reasons, including expense and distance. Our academic scholarships program targets

the young adults in our care, as well as young adults from the areas we serve and the children of our incredible staff, ensuring youths can connect to good quality education, especially as they pursue a higher education. School fees, university fees, technical college fees, school transport, uniforms, stationery and text-books are the biggest and most important annual expenses for TOBFC.

Securing regular funding for the education of our children and youths, will not only help the most vulnerable gain a formidable voice within their communities, Tanzania and abroad, but will work towards closing the income gap between rural and urban populations.

The total projected school fee costs per year for TOBFC:

YEAR	2018	2019	2020	2021	2022	2023	2024
TOTAL SCHOOL FEES	\$ 38,800	\$ 46,400	\$ 45,400	\$ 68,200	\$ 64,600	\$ 66,200	\$ 75,400

MONTESSORI OUTREACH PROGRAM

MONTESSORI KINDERGARTENS

TOBFC has established over 30 Montessori Kindergartens, with over 2,000 students enrolled annually. On average, there are 65 students per class, 50 % of whom are female.



Our program merges the Tanzanian curriculum with the Montessori pedagogy, using Swahili as the teaching language. We provide our schools with new materials for their Casa Classrooms regularly. In addition, TOBFC implements health initiatives for children registered in the schools including handwashing, de-worming and anti-fungal campaigns.

Montessori Pedagogy is based on the work of Dr. Maria Montessori. Her educational theories were formed through her extensive observation of children and how they learn best. She prepared activities that help every child in their development.

According to Montessori, children who work in a carefully prepared environment are more concentrated and have better self-control. Didactic tools, named 'materials' are designed and implemented in the classroom to help the development of the mind, concentration, coordination, independence, socialization and sense of order of the child.

Montessori pedagogy is child-based and 'scientific'. It deconstructs educational barriers, helping children become independent, confident and academically capable. The materials are made from easily and readily available items, supporting the application of the pedagogy in resource-poor settings.



MONTESSORI OUTREACH PROGRAM

Our Montessori Program is unique as it partners with each community, in order to foster community investment and support, ensuring the program's success. In order to have a school built in their respective community, leaders must approach TOBFC and request the Montessori program. The community must provide an initial structure and/or land where TOBFC can build.

The community is responsible for putting together a school committee and presenting a potential teacher candidate to TOBFC. The candidate joins our Montessori Professional Development Program on a 6-month probationary period. The teacher is employed by the community.

TOBFC asks that the community contributes to the building of the school, such as fetching water for mixing cement, providing food and housing for construction workers and loading and offloading construction material transport trucks.

TOBFC covers all other costs associated with the school, including the rest of the teacher's salary, furniture and learning materials for their classrooms. To ensure the quality of education, our Montessori teachers receive ongoing training, including an annual, 15-day, intensive, course hosted by TOBFC.

In 2017, two of our staff began the AMI Montessori Diploma Program in Dar-es-Salaam on full scholarships provided by the Arthur Waser Foundation.

TOBFC cooperates with local and district governments to bring quality, early-childhood education to rural communities.

TOBFC has established 30 Montessori Kindergartens (each a "*Casa Classroom*") and has completed the construction of 17 Montessori school buildings, for children who otherwise would have no "*formal*" education.



MONTESSORI OUTREACH PROGRAM

MONTESSORI ACADEMY

In 2018, TOBFC founded our Montessori Academy in Uyole. It provides top quality, early childhood, and primary level education for children and youths at TOBFC.

The school combines Montessori-style learning for children, with project-based learning for youths, providing them with the best possible academic foundations for the future.



The school has four classrooms. The Casa classroom, the lower primary classroom, the upper primary classroom and the transition year classroom. In addition, it has a beautiful library, staff room, resource centre, an extensive garden and playground, performance space, dining space and some farm animals for interactive learning.



We have a maximum capacity of 25 students, maintaining a 4:1 ration in each class. In addition, the school taps into local talent to work with the students, including running weekly dance workshops.





FINANCIAL

CARE



KUBUNI CENTRE AND COLLABORATIVE

KUBUNI CENTRE AND COLLABORATIVE



The Kubuni Centre is the innovation, entrepreneurship and financial autonomy hub of The Olive Branch. Focused on community empowerment, the Kubuni Centre, provides the skills, resources and physical space for Tanzanians to actualize their innovative ideas.

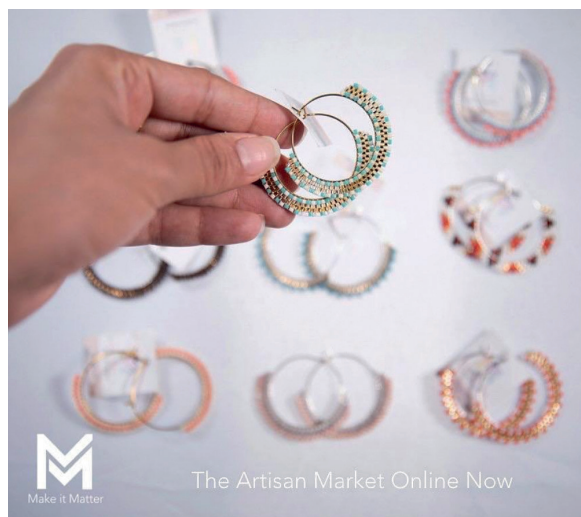
The Kubuni Collaborative brings together various skilled personnel (mentors from Canada, USA, Ireland, Germany and other countries) to create knowledge sharing opportunities with Tanzanians in the Mbeya Region.

Our international mentors approach their mentor/mentee relationships, as a chance for Tanzanians to hone their skills and implement their new ideas with a significant amount of support throughout the development process. Both the mentor and mentee have valuable knowledge to bring to the table.

FINANCIAL CARE

KUBUNI ARTISANS

At our site, in Uyole, Mbeya we have a group of artisans making beautiful handmade earrings. Maisha is our line of products our Kubuni Artisans have crafted. Maisha (life in Swahili) provides employment, and financial stability and independent for many individuals in the Mbeya Region.



By purchasing our products, you are not only receiving a uniquely hand-crafted item, but you are empowering vulnerable people and helping support The Olive Branch for Children's projects.

Find the Kubuni Artisans products on our etsy page:
www.etsy.com/shop/kubunicentre

STEP UP YOUTHS FOR YOUTH DEVELOPMENT

In 2018, TOBFC launched the Step-Up: Better Me, Better Tanzania Camp which combined sports, vocational training and business seminars for youth. Over 150 youths have participated in our camps.



Our camps include:

- *Sports development, introducing new activities to the community, as well as improving existing football (soccer) skills;*
- *Artisan and vocational training, teaching new, transferable skills, including painting, batiking, beading, basket-weaving etc.;*
- *Business seminars, helping youths learn how to write business proposals, balance budgets and develop new, and creative ideas; and*
- *Academic workshops, reviewing previously learned material in all the formal, secondary school subjects and introducing new materials to get a jump start on coursework.*

KUBUNI MUSIC

In 2018, we launched Kubuni Music, the branch of Kubuni that supports artists to create music that matters including songs on gender equality, HIV/AIDs and other life skills.



FINANCIAL CARE

*Through **TOBFC's Akiba! Nufaika!!** (Save! Benefit!!) Program, the Organization oversees community cooperative banks that enable individuals to save their money, loan to one another and hopefully achieve a degree of financial security.*

KUBUNI CARPENTRY

Our carpentry program provides apprentices with experience-based learning under the tutelage of highly skilled professionals. Our program connects apprentices with skilled mentors, intensive training, access to machines and space to work.



FINANCIAL AUTONOMY

Each Akiba! Nufaika!! savings group is comprised of at least 15 members. Each such group determines whether its “fiscal period” will be 6 months, 9 months or 12 months.



During the applicable period, members can save and invest through the group and receive loans from the group's savings. At the end of the period, each member is returned that member's savings plus the applicable percentage of dividends. The dividends are a result of the interest rates on loans given out by the individual “banks”.

The program currently has 164 savings groups led by community members and a total of 3400 members, of whom the majority are vulnerable women.

Participants in the Akiba! Nufaika!! program have used their savings to

- pay school fees for their children,
- farm without taking out loans,
- build homes,
- pay off medical bills,
- start new businesses,
- expand their existing businesses and
- support their families.

This program operates in communities outside of the Mbarali District too, serving the Mbeya Vijijini District too.

FINANCIAL CARE

KUBUNI GRANTS

TOBFC understands financial security is central to positive development for individuals, families and communities. Every year, TOBFC offers various levels of start-up grants to help individuals bring to fruition their plans and businesses.

The grants range from \$75 to \$1500. Each grantee is appointed a case worker, who helps them realize their plans and monitors their progress.





HEALTH

CARE

HEALTH CARE



HEALTH CARE

MOBILE MEDICAL CLINIC

Our Mobile Medical Clinic ("MMC") operates in our rural catchment area, serving 22 communities monthly.



We deliver lifesaving services and medicines directly to our beneficiaries, including:

- *HIV Testing and Antiretroviral distribution with Nurses from the closest Government CTC*
- *Infant and Maternal Health Care, including vaccinating infants and children with the standard set of childhood vaccines*

- *Condom Distribution, STD information and Family Planning Assistance*
- *Blood Pressure Testing and follow-up and Non-Communicable Disease Information*
- *Monitoring of Nutrition in Children under 10 years old, and distribution of "Plumpy Nut" (ready to use therapeutic food, a peanut-based paste for treatment of severe acute malnutrition)*
- *Provision of Medical Care for minor illnesses, referrals, and transport to Mbeya for major health cases*
- *Provision of wound care and burns, and training of primary caregivers in First Aid and continued care*
- *Provision of maternity kits for expectant mothers*
- *Sponsoring of certain, surgical interventions*

We strive to make our MMC as effective as possible. All of our MMC nurses are from the closest CTC. Through our clinics we provide capacity building and training opportunities to polish their skills.

Our clinics are paired with our Complete Community Care Workers. They support their local dispensaries and health centers, facilitate our MMC, visit our clients and host health seminars in their communities. We invest in ongoing professional development for our Complete Community Care Workers, including running quarterly seminars.

FEET FIRST PROGRAM

The Feet First Program is TOBFC's wound care program. The program has provided valuable podiatry services to over 600 individuals in our district.



Our Feet First Program specializes in wounds caused by Diabetes, Leprosy, and other Chronic Illnesses, as well as, traumatic wounds, caused by minor or major accidents.

In addition, the program provides treatment and/or management of lower limb problems such as arthritis, neuropathy, plantar fasciitis and fungal infections.

Our program provides at-home services to ensure all patients are able to get the care needed and become healthy and active members of society again.

HEALTH CARE

HEALTHY MAMAS

TOBFC's Healthy Mamas program focuses on maternal health. We ensure the women connecting to our Mobile Medical Clinic receive the pre-natal care they require to stay safe and healthy during the duration of their pregnancy.



We provide free birth kits to vulnerable women, consisting of 2 pairs of surgical gloves, a plastic dish and a plastic sheet. Many expectant mothers in the areas we serve cannot access or afford birth kits, which are mandated by all medical facilities, when a woman is admitted to deliver.

We care deeply about the women we serve and want to make vaccinations and health monitoring of their infants and children accessible and easy.

Our Mobile Medical Clinic brings peri-natal care to the doorsteps of women who previously had to walk for hours to have their infants and children vaccinated and seen by medical professionals.

Our Mobile Medical Clinic offers free birth control to women wanting to plan if and when they will become pregnant. This helps women manage their bodies and their families.

TOBFC's Healthy Mamas program supports mothers throughout their reproductive journey. We know, a healthy and happy mama is crucial to a happy and healthy family.

HEALTH OUTREACH

TOBFC conducts community outreach programs providing communities with the access to health information needed to make informed decisions. At all of our Montessori Schools, TOBFC has a 'health board' with a mix of picture and text-based posters in local languages discussing key health issues our communities face.

TOBFC conducts monthly community seminars:

- *concerning diabetes, high blood pressure, epilepsy and mental health, and educating thousands of community members about prevalent health challenges in their communities;*
- *concerning women's health, educating hundreds of women about breast and ovarian cancer, family planning and menopause;*
- *concerning basic first aid and wound care, basic hygiene and the importance of hand washing, and water borne diseases and*
- *concerning sexual health, raising awareness about sexually transmitted diseases, promoting safe sex and proper use of condoms, and reducing stigma associated with HIV/AIDS.*



COMMUNITY

CARE



COMMUNITY CARE

COMMUNITY CARE



*Complete Community Care is TOBFC's group of programs that ensure the communities in our catchment area are **healthy and thriving**.*

These programs identify vulnerable people in the community, and connect them to TOBFC services including:

- *Providing companionship to those who experience social isolation,*
- *Supporting vulnerable individuals and families with basic needs such as, food, and safe housing,*
- *Giving medical attention to individuals requiring advice, counselling, treatment and management of health concerns,*
- *Connecting community members to the Mobile Medical Clinic or to other TOBFC services,*
- *Providing Quality of Life services, including cleaning and organizing houses, providing walking aides, toilet aides and mattresses.*

COMPLETE COMMUNITY CARE WORKERS

The Olive Branch for Children has Complete Community Care Workers in every village we operate in. They are our eyes and ears in the villages we serve, identifying vulnerable individuals in need of our services.

Our Complete Community Care Workers provide:

- *At-home health services, care, and support for 600 individuals living with HIV/AIDS, Diabetes, High Blood Pressure, Epilepsy and other chronic illnesses and disabilities.*
- *Support their local dispensaries and health centers.*
- *Facilitate our Mobile Medical Clinics,*
- *Visit our Complete Community Care clients and,*
- *Host seminars in their communities.*

Every month, TOBFC hosts health and service provision trainings for the 21 HBC Providers, investing in their continued growth and improvement as Providers.

COMMUNITY CARE

We have a total of 8,992 direct beneficiaries from our community outreach programs, and a total of 23,000 indirect beneficiaries from per annum.

FOOD AND SOCIAL SUPPORT

TOBFC targets the most vulnerable families and individuals in our catchment area. Our food support recipients receive food and hygiene products every month. This program addresses the elderly, new migrants, youth under 18 with no surviving family, people with disabilities and people with chronic health issues.

Our program is the social safety net for our area, in a country where there is none. Our program works on a rotating basis, if people due to our support regain the ability to work again, they will be replaced by someone in need.

On top of food and hygiene products, our Complete Community Care Workers have identified a dearth in

socialization for some of our food support clients with disabilities and old age. Our staff visit these households on a bi-weekly or monthly basis, sharing tea and conversation with them.

We conduct ongoing evaluations with our food support clients. This constant line of communication has led to the development of various products, including walking and toilet aides, out of our Kubuni Centre, designed to improve the quality of life of our clients.

ADDITIONAL MEDICAL AND SURGICAL CARE REFERRALS

Through our Complete Community Care Workers and our Mobile Medical Clinic, we are able to identify cases where referral to larger hospitals is needed. On a case to case basis, TOBFC funds the referrals and provides qualified medical personnel to advocate on their behalf during their visits.



As most of our beneficiaries are uneducated, it is important to ensure they are accompanied with an advocate who can aid in navigating the healthcare system and ensure they get the care needed. In certain cases, the surgery is funded by TOBFC.

TEAM HOPE

After identifying households in need of repair, TOBFC sends Team Hope to fulfil the renovations. Team Home is comprised of young men with disabilities who have been trained at the local vocational centre and our Kubuni Centre and Collaborative.

The team repairs houses and dismantles the stigma surrounding people with disabilities. We are providing a positive example to the communities we serve that youth and people living with disabilities can be positive influences in their communities.

TOBFC recognises the importance of ensuring vulnerable individuals registered with our Complete Community Care Program have access to clean and safe housing.

TOBFC identifies the most vulnerable individuals in our Complete Community Care Program and commits to refurbishing their existing home or building them a new home.

COMMUNITY CARE

TOBFC refurbishes, constructs and furnishes the homes, providing our most vulnerable beneficiaries with a living environment that will help them stay safe, healthy and happy.

INFRASTRUCTURE DEVELOPMENT TOBFC CONSTRUCTIONS

TOBFC helps fill infrastructural gaps in the most vulnerable communities we serve in Tanzania. TOBFC often contributes construction materials to various construction projects, and make minor renovations to vulnerable people's houses.



We have completed the construction of 16 Montessori Schools in our catchment areas. In addition, we have constructed a medical clinic and contributed cement for the construction of two other clinics.

In 2019, we finished the building of our new, Peace Home (sponsored by Muskaan, Peace Pickering Lutheran Church and various other sponsors) in the community of Mswiswi, as well as, completing the major refurbishment of The Olive Branch Montessori Academy and building the beautiful playground at the school (sponsored by the Children's Garden School).

WATER IS LIFE

Water security is central to food and economic security. TOBFC is committed to ensuring the communities within our care improve their access to water. Our program focuses on the digging of borehole wells, the refurbishment of existing wells and the implementation of water catchment systems. Water is life and TOBFC continues to support communities in their efforts to become water secure.



16 Montessori Schools

1. Mwashota

Sponsored by the Montessori School of Kleinburg

2. Lyankunda

Sponsored by the Montessori School of Kleinburg

3. Lyanang'we

Sponsored by Tunakujali Tanzania

4. Mbwawa

Sponsored by Tunakujali Tanzania

5. Mwika

Sponsored by Tunakujali Tanzania

6. Ugomtwa

Sponsored by the awalker Foundation

7. Utengule-Usangu

Sponsored by the Montessori School of Kleinburg

8. Magurula

Sponsored by the Aurora Montessori School

9. Nganga

Sponsored by Tunakujali Tanzania

10. Gomoshelo

Anonymous

11. Azimio-Mswiswi

Sponsored by the Toronto Funding Network

12. Azimio-Mapula

Anonymous

13. Wambilo

Sponsored by Mayor Maurizio Bevilacqua

14. Simike-Mapula

Sponsored by Mayor Maurizio Bevilacqua

15. Ihanga

Sponsored by LiUNA! 183

16. Ugandilwa

Anonymous

COMMUNITY CARE

CULTURAL PRESERVATION

Tanzania is home to over 120 ethnic groups. Each of these groups differ along language, culture, and social organization. Interethnic conflict has not been a major issue within Tanzania, as it has been in other African countries.

Today, ethnicity still tends to reflect geographic area, however groups live peacefully together. The Olive Branch for Children has worked in the Usangu Plains for the last 15 years.

The Usangu Plains is historically where the Usangu people lived and ruled. Today, the Usangu Plains is an ethnically diverse area comprised of various ethnic groups including the Maasai, Sukuma, and Sangu.

TOBFC works in partnership with the leaders of groups to ensure cultures are preserved.

Our projects include:

- *Usangu Atlas, which locates and documents remote villages on Google maps*
- *Documenting and translating the history of the Usangu Plains, and the various ethnic groups residing in the area*
- *Providing Early Education Centres in our catchment area with educational materials in local languages, and Kiswahili to ensure languages are preserved between generations*
- *Raising awareness, and campaigning for the preservation of the Usangu's Chief's Palace located in Utengule Village with the aim to create a community-owned museum and cultural heritage site*

KICK IT MOBILE LIBRARIES

In 2016 TOBFC established 5 KICKIT mobile libraries to promote literacy and reading, serving a total of 11 communities, 600 direct beneficiaries and 1000 indirect beneficiaries on a weekly basis. Our mobile libraries operate on bicycles.



The facilitators, chosen by their communities, attach trunks of books to the back of their bikes, bringing much needed textbooks and amazing storybooks to the 11 communities in the program. They spend 2 hours, twice per week, in each village their particular library serves.

Our facilitators use either our Montessori Classroom structures or a local primary school classroom, to ensure the participants have a safe place to read and study. Our facilitators are responsible for the books, bikes and managing the two-hour sessions. We continuously update our book collection, providing the newest Swahili language storybooks for the pleasure of all the participants.



CLIMATE CARE



CLIMATE CARE

CLIMATE CARE

*The current deforestation rate in Tanzania is approaching **373,000 hectares** per year, making it among the highest in East Africa.*

GREENIFICATION REFORESTATION AND REVITALIZATION

TOBFC believes we need to find solutions that can increase the standard of living in rural communities while preserving and revitalizing the environment.



Some of our current and future projects include:

- *Planting fruit trees/gardens at the Olive Branch Montessori Academy*
- *Starting a fruit orchard at the Peace Home*
- *Planting water retaining trees around the our wells*
- *Planting fruit trees in public spaces in our catchment area and at our Montessori Classrooms*
- *Starting community seed banks*

TOBFC BETTER FUEL

In 2019, after an extensive research project initiated and implemented by TOBFC, we have launched our Better Fuel initiative.



This project is geared toward supporting communities in their efforts to change to natural gas, reducing the amount of deforestation in the area we serve and improving the overall health and quality of life of the communities we work in.

KUTUNZU GAS

TOBFC is committed to climate care. Our goal is to support the individuals and communities we serve in their efforts to reduce their use of firewood and charcoal.



In 2020, with the support of the Kelowna Rotary Club, we opened a 'not-for-profit' natural gas store in the community of Utengule, making switching from firewood and charcoal to natural gas easier and more affordable. In addition, the store sells trees at cost, encouraging individuals to reforest their communities

CLIMATE CARE

RENT TO OWN BEEKEEPING

TOBFC's Rent-to-Own Beekeeping project combines our commitment to financial security for women with our dedication to environmental preservation.



Women are provided with 5 beehives each, a communal enclosure, bee suit, training, on-going support and a market for their honey and beeswax. In return, the women provide our Kubuni Artisans with a nominal amount of beeswax and honey to produce new products with.

FOLLOW US



www.theolivebranchforchildren.org
The Olive Branch for Children
The Kubuni Centre and Collaborative



The Olive Branch for Children
The Kubuni Centre and Collaborative



@theolivebranchforchildren
@kubuni_centre

The Olive Branch For Children

14-3650 Langstaff Rd., Suite # 377,
Woodbridge, Ontario. Canada

www.theolivebranchforchildren.org